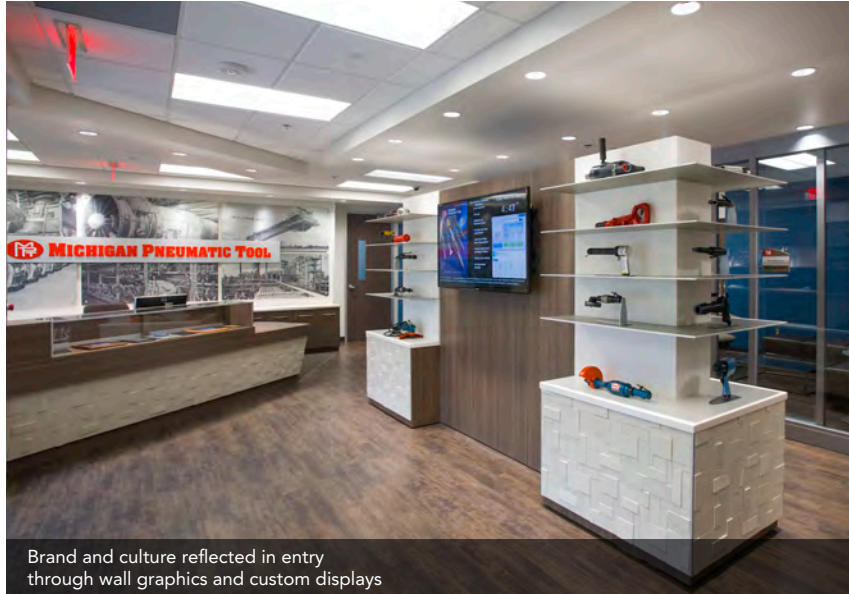
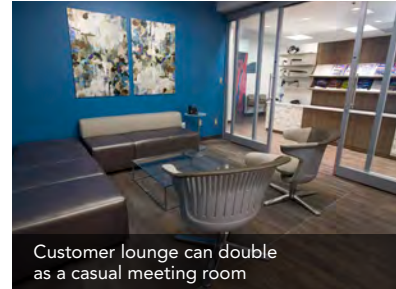


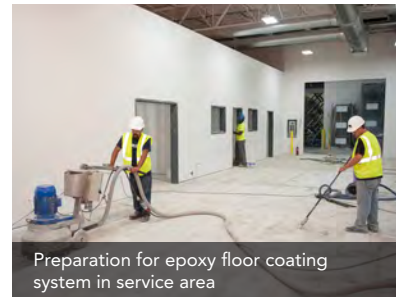
## harder working spaces



Brand and culture reflected in entry through wall graphics and custom displays



Customer lounge can double as a casual meeting room



Preparation for epoxy floor coating system in service area

### specs

Corporate  
Romulus, Michigan  
75,000 square feet  
56 Employees

### solutions provided

Space Planning  
Furniture  
Floorcovering  
Architectural Products  
Construction  
Audiovisual Solutions

### strategic partners

Arconcepts, Inc.  
Primeway  
Solomon Plumbing  
Steelcase Financial

### featured products

cobi Seating by Steelcase  
Campfire Big Table by Turnstone  
Leap Seating by Steelcase  
Host Table by Coalesse  
Move Seating by Steelcase  
Custom Millwork by Primeway

## Michigan Pneumatic Tool

### Tooling Up for Growth

When Michigan Pneumatic Tool (MPT) decided to create a new corporate headquarters, an important objective was to create a state-of-the-art workspace that properly reflected the company's dynamic culture. High on their priorities list was a workspace that supports organic collaboration. To accomplish this, we engaged all of our NBS divisions to provide an integrated work environment (architectural systems + flooring + furniture + technology). The result: flexible spaces that support evolving work styles.

The imperative for flexible spaces was carried through to the conference and training room. In here, an operable wall easily reconfigures a large space. When it's open, the space can host inter-departmental meetings or training sessions. Close it and you create a traditional conference room fully equipped with presentation and communication technologies.

The typical lunchroom has been replaced with multi-functional break rooms. Now these spaces can be used throughout the day for casual meetings. MPT recognized the importance of a workspace that attracts the best talent and keeps them engaged. Vice president Bob Arthur noted, "Our vision was to provide an environment commensurate with the quality of our staff. The NBS team made our vision a reality. We're proud of this space."

< continued **Michigan Pneumatic Tool**



Operable partition allows for flexible training or meeting space with full HD presentation capabilities and interactive white board

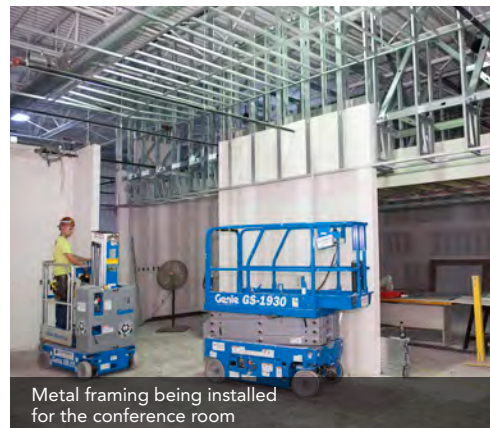
The 75,000 sq. ft. office/warehouse complex required a total renovation. Given the project scope, it was an excellent match for our integrated services. First, our space planners developed a functional, flexible floorplan. Next, NBS Construction Solutions provided build-out services. NBS Floorcovering Solutions worked concurrently with our interior designers to incorporate practical floorcoverings into a variety of areas. Communication and networking systems were designed and installed by NBS Audiovisual Solutions to support MPT's goals for collaboration, training and presentations.

When it comes to power tools, performance and functionality are critical measures of quality. Naturally, those are the same principles we adhered to in creating the MPT corporate offices.

To learn more about this leading industrial tool manufacturer and distributor, visit [MichiganPneumaticTool.com](http://MichiganPneumaticTool.com)



Optimized real estate with multi-functional break room



Metal framing being installed for the conference room